



Nspire

REIMAGINING RETAIL

Smart Displays | Custom Design | Manufacturing



Creating retail spaces that excite the senses.

Nspire was created to provide merchandising solutions that inspire shoppers, retailers, and brand marketers by delivering a unique and memorable shopping experience.

Our solutions entice shoppers to pause, and interact with products at a much deeper level.



SIGHT

Electrified tracks, with plug 'n play accessories, neutralize shadows and provide light where it matters most, on merchandise.



TOUCH

Endless aisle technology, and self-checkout solutions, are integrated into tablets and touch screens powered by Engage Fit 'N Light systems.



SOUND

Touchscreens are powered through plug 'n play standards and provide music and audio for up-sell and cross-selling messages.



SMELL

Aroma dispensers diffuse fragrance that becomes a natural part of the space and create a subconscious association with your brand.



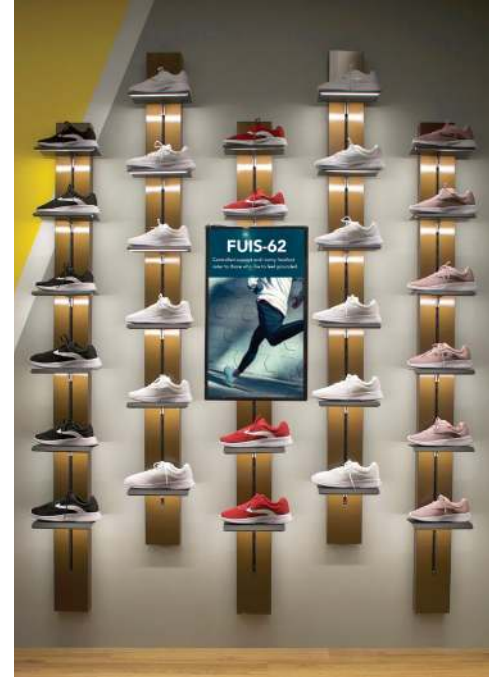
ENGAGE W



ENGAGE ROPE



ENGAGE NICHE



ENGAGE RAFTER



Where Physical & Digital Merchandising Meet

The Engage Fit 'N Light technology is built around powered upright standards, that provide electricity to LED lights embedded into shelves, back-lit signage, touch screens and a host of visual merchandising tools, to seamlessly integrate physical & digital retail (Phygital).





Touch screens enable omnichannel retail.



Back-lit soft signage provides impactful messages



LED lighting embedded into shelves and faceouts



Monitors convey videos, promotional messages or product information.

ENGAGE W

Wall-mounted standards.

Choice of aluminum finishes.

Assorted menu of components built to fit your needs.





ENGAGE ROPE

Standards are recessed into metal framework which is anchored to a wall.

Metal frame can be customized with a choice of finishes.

Shelves can be customized with a choice of materials, including leather (shown).

Assorted menu of components built to fit your needs.

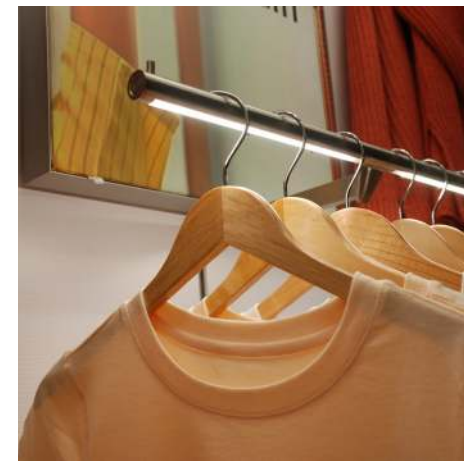




ENGAGE NICHE

Choice of finishes and materials for metal components and background panels.

Assorted menu of components built to fit your needs.

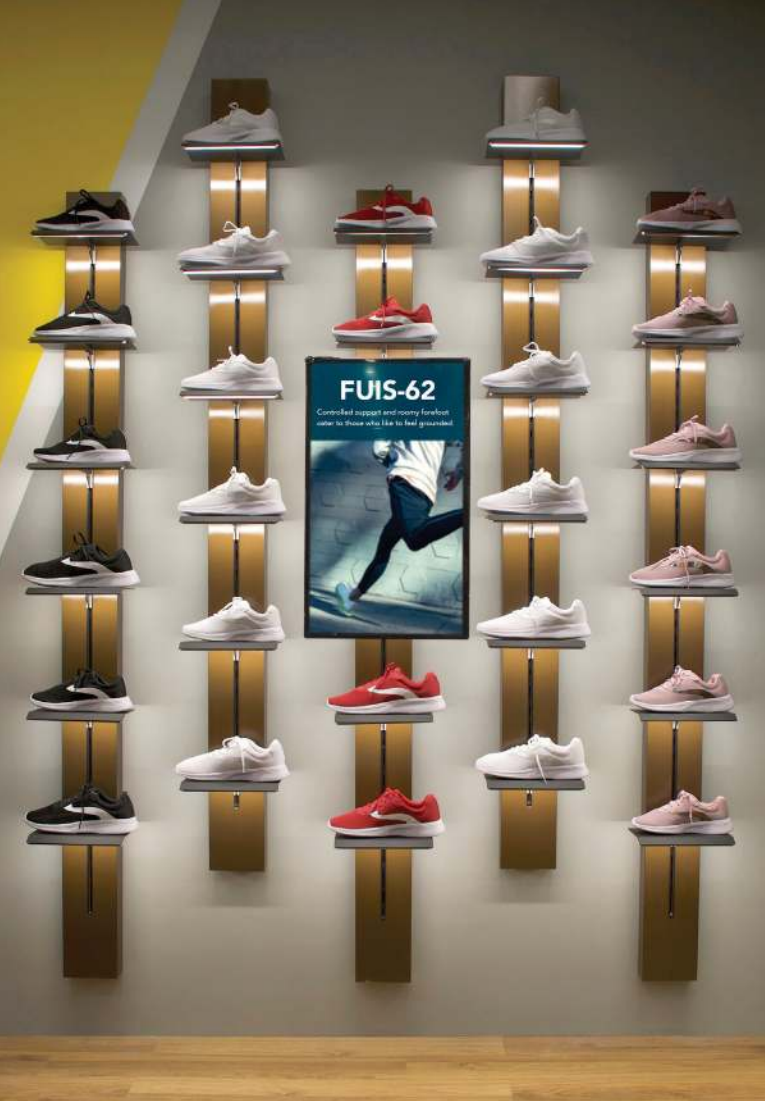


ENGAGE RAFTER

Standards are recessed into a metal rafter system, which is anchored to a wall.

Metal frame and shelves can be customized with a choice of finishes.

Assorted menu of components built to fit your needs.





SYNTRACK V

Form, function and versatility.

Front fastening.





VIBE

Choice of color inserts.

Mid-floor units available.

